

Moose
Alces alces
82

Animalia, Chordata, Mammalia
5 POINTS

- Alces alces has a **MOVE** of 2.

In Europe, a moose is known as a European Elk.

Image by Catherine Fielder
l-h4x3d.deviantart.com/

Cold, Cool

Increase Biodiversity
Event card

Event

PLAY: can be played immediately for below effect and then discarded.

EFFECT: Allows player to look through his/her discard pile, and choose 1 **SPECIES** card to put back into his/her hand.

Image by demonflair
demonflair.deviantart.com/

Black-eyed Hermit Crab
Pagurus armatus
43

Animalia, Arthropoda, Crustacea
5 POINTS

- Pagurus armatus has a **MOVE** of 1.
- Pagurus armatus must be played next to at least one **OCEAN TERRAIN** neighbour.

Image by Meg Lyman
meglyman.deviantart.com/

Cool, Warm

Eurasian Coot
Fulica atra
52

Animalia, Chordata, Aves
5 POINTS

- Fulica atra has a **MOVE** of 2.

When food is lacking, Fulica atra adults may kill their young to lessen the competitive pressure.

Image by Psamophis
psamophis.deviantart.com/

Cool, Warm

Gray Wolf
Canis lupus
73

Animalia, Chordata, Mammalia
7 POINTS

- Canis lupus has a **MOVE** of 2.

Highly territorial, Canis lupus packs defend their territory through scent marking, howling, and direct attacks.

Image by Banto88
banto88.deviantart.com/

Cold, Cool, Warm

Home Card
House

Starter

- This is a **HOME** card. The game starts with each player having a **HOME** card played on the table next to each other.
- HOME** cards represent all **TERRAIN** and **CLIMATE** values.

Image by sc-parade
sc-parade.deviantart.com/

61

3 POINTS

- The seeds of this species are incredibly hairy.*

**Cool,
Warm**

9 1

5 POINTS

- The relatively soft, whitish wood is used extensively for such items as clothespins, spools, ice cream sticks, and toothpicks, as well as for pulpwood for paper.*

**Cool,
Warm**

7 1

3 POINTS

- 1

**Cool,
Warm**

4 2

A detailed illustration of a monarch butterfly perched on a green leaf. The butterfly's wings are orange with black veins and white spots along the edges. The background is a solid green color.

5 POINTS

-

**Cool,
Warm**

4 3

A large, detailed illustration of a red beetle with black and white stripes on its back. The beetle is shown from a side profile, facing right. It has six legs and two antennae. Several speech bubbles or text boxes are placed around the beetle, containing text related to the 'Beetle' section of the book. The background is plain white.

6 POINTS

- well as a **POLLINATOR**.

**Cool,
Warm**

5 1

5 POINTS

- (continued)*

Cold, Cool

Common House Mouse

Mus musculus

53

Animalia, Chordata, Mammalia

4 POINTS

- *Mus musculus* has a **MOVE** of 2.

Mus musculus is considered a human **COMMENSAL** and can be played individually or under a *homo sapiens* card.

Image by Sarah Stringhetta

saraquarelle.deviantart.com/

Cool, Warm

Oil Spill

Event Card

Event

PLAY: on 1 **SPECIES** card.

EFFECT: The played **SPECIES** card is discarded. All neighbouring species cards still adjacent to the **EVENT** after 1 turn will also need to be discarded.

Image by Stephanie Tan

wildhue.deviantart.com/

Pacific Dogwood

Cornus nuttallii

91

Plantae, Angiosperms, Eudicots

5 POINTS

- *Cornus nuttallii* has a **SPREAD** of 1 (requires **POLLINATOR**).

Image by Jesse Kempton

darkconofman.deviantart.com/

Cool, Warm

Common Raven

Corvus corax

63

Animalia, Chordata, Aves

2 POINTS

- *Corvus corax* has a **FLIGHT** of 2.
- *Corvus corax* can inhabit any landbased terrain

Corvus corax is thought to be highly intelligent.

Image by Jesse Kempton

darkconofman.deviantart.com/

Cold, Cool, Warm, Hot

Red-winged Blackbird

Agelaius phoeniceus

53

Animalia, Chordata, Aves

3 POINTS

- *Agelaius phoeniceus* has a **FLIGHT** of 2.

Agelaius phoeniceus is sexually dimorphic; the male is all black with a red shoulder and yellow wing bar, while the female is a nondescript dark brown.

Image by Rachel Caauwe

banvivirie.deviantart.com/

Cool, Warm

Bold Jumping Spider

Phidippus audax

43

Animalia, Arthropoda, Arachnida

8 POINTS

- *Phidippus audax* has a **MOVE** of 2, and can feed on creatures of **SCALE** 4 or less.

"These spiders have been known to jump up to 50 times their own body length."

Image by Andrew K. Gott

www.agott.com/

Cool, Warm

Bull Thistle

Cirsium vulgare

71

Plantae, Angiosperms, Eudicots

2 POINTS

- *Cirsium vulgare* has a **SPREAD** of 1 (requires a **POLLINATOR**)
- *Cirsium vulgare* is considered to be an **INVASIVE** species of *Plantae* cards of 6/7 scale.

Image by Mason Fetzter
www.masonfetzer.com

Cold, Cool, Warm

Indian Plum

Oemleria cerasiformis

81

Plantae, Magnoliophyta, Magnoliopsida

4 POINTS

- *Oemleria cerasiformis* has a **SPREAD** of 1 (requires a **POLLINATOR**).
- "Its twigs can be chewed as a mild anesthetic and aphrodisiac."

Image by Derek Tan
www.botany.ubc.ca/derek

Cool, Warm

Black Carpenter Ant

Camponotus pennsylvanicus

43

Animalia, Arthropoda, Insecta

4 POINTS

- *C. pennsylvanicus* have a **MOVE** of 2.
- *C. pennsylvanicus* can feed on creatures of **SCALE** 5 or less.
- *C. pennsylvanicus* can also thrive in **URBAN** habitats.
- This image depicts a worker.

Image by Kiriko Moth
kiriko-moth.com

Cool, Warm

Home Card

Apartment

Starter

- This is a **HOME** card. The game starts with each player having a **HOME** card played on the table next to each other.
- **HOME** cards represent all **TERRAIN** and **CLIMATE** values.

Image by Justin Miller
www.justindmiller.com

Valley Oak

Quercus lobata

91

Plantae, Magnoliophyta, Magnoliopsida

5 POINTS

- *Quercus lobata* has a **SPREAD** of 1 (requires a **WIND** card).
- *Quercus lobata* is the largest of all oak trees in North America, often with trunks 7 feet in diameter, and heights of over 100 feet.

Image by David Miller
www.DavidMillerArt.com

Cool, Warm

Drought

Event Card

Event

PLAY: on 1 **SPECIES** cards, with land based **TERRAIN**.

EFFECT: Convert to **DESERT** terrain for 1 turn. Discard played **SPECIES** that are incompatible.

Image by Jordan Gribble
theluvvre.webs.com/

Warm, Hot

Event Card



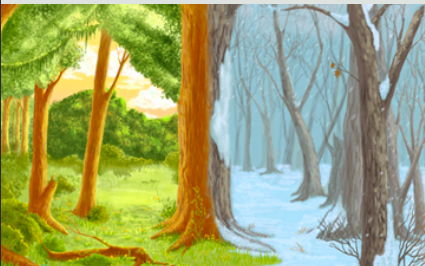
Event

EFFECT: Convert to **URBAN** terrain permanently. Discard played **SPECIES** that are incompatible.

Image by *A. L. Radeck*
alradeck.daportfolio.com/

**Cold, Cool,
Warm, Hot**

Event Card



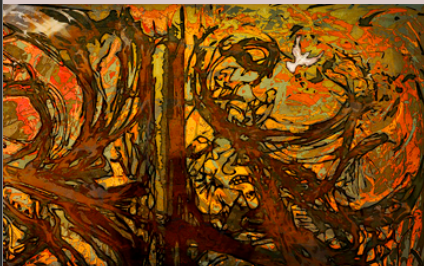
Event

EFFECT: Convert to **COLD** climate for 1 turn. Discard played **SPECIES** that are incompatible.

Image by *S B Kennedy*
wingedsonar.deviantart.com

Cold

Event Card



Event

EFFECT: The played **SPECIES** card is discarded.

Image by *Matt Brown*
www.mattbrownart.com/

Event Card



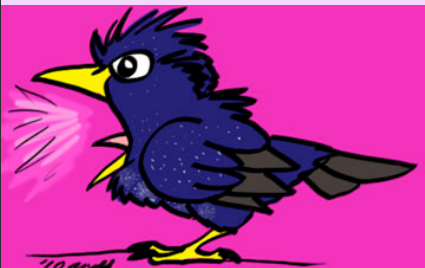
Event

EFFECT: Convert to **OCEAN** terrain for 1 turn. Discard played **SPECIES** that are incompatible. Note that species capable of **FLIGHT** are exempt.

Image by *Devin Young*
logic-bomb42.deviantart.com/

Sturnus vulgaris

5 3



10

Animalia, Chordata, Aves

1 POINTS

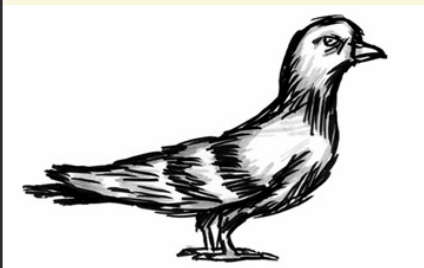
- *Sturnus Vulgaris* has a **FLIGHT** of 2.
- *S. Vulgaris* is considered to be an **INVASIVE** species of *Aves* cards of identical scale and food chain rank.
- These birds are known to gather in huge flocks (sometimes as large as 1 million birds!).

Image by *Tricia Arnold*
babbletrish.blogspot.com/

Cold, Cool, Warm

Columba livia

5 2



10

Animalia, Chordata, Aves

2 POINTS

- *Columba livia* has a **FLIGHT** of 3.
- *Columba livia* is considered to be an **INVASIVE** species of *Aves* cards of identical scale and food chain rank.

Image by *Randy Laybourne*
lookforwardtothepast.com

Cool, Warm

House Sparrow

Passer domesticus

52

Animalia, Chordata, Aves

2 POINTS

- *Passer domesticus* has a **FLIGHT** of 2.
- *Passer domesticus* is considered to be an **INVASIVE** species of **Aves** cards of identical scale and food chain rank.

Image by Tricia Arnold
babbletrish.blogspot.com

Cold, Cool, Warm

Trembling Aspen

Populus tremuloides

91

Plantae, Magnoliophyta, Magnoliopsida

5 POINTS

- *Populus tremuloides* has a **SPREAD** of 1.
- One *P. tremuloides* colony (a community of trees from the same original tree), named **Pando**, is sometimes considered the heaviest and oldest living organism.

Image by MariposaEnsismada
flickr.com/photos/47989154@N03/

Cool, Warm

Policeman's Helmet

Impatiens glandulifera

51

Plantae, Ericales

1 POINTS

- *I. glandulifera* has a **SPREAD** of 1 (requires a **POLLINATOR**).
- *I. glandulifera* is considered to be an **INVASIVE** species of **Plantae** cards of identical scale and food chain rank.

Image by Derek Tan
www.botany.ubc.ca/derek

Cool, Warm

Winter Wren

Troglodytes troglodytes

52

Animalia, Chordata, Aves

4 POINTS

- *Troglodytes troglodytes* has a **FLIGHT** of 2.

Image by Gaynor Fox
phylogame.org

Cold, Cool, Warm

European Honey Bee

Apis mellifera

42

Animalia, Arthropoda, Insecta

5 POINTS

- *Apis mellifera* has a **MOVE** of 2
- *Apis mellifera* is considered a **POLLINATOR**.
- This image depicts a worker.

Image by Kiriko Moth
kiriko-moth.com

Cool, Warm

Red Fox

Vulpes vulpes

63

Animalia, Chordata, Mammalia

3 POINTS

- *Vulpes vulpes* has a **MOVE** of 2.
- *Vulpes vulpes* is also capable of surviving in **URBAN** habitats.


Image by Ele Willoughby
minouette.etsy.com

Cold, Cool, Warm

Striped Skunk

Mephitis mephitis

63



Animalia, Chordata, Mammalia

3 POINTS

Mephitis mephitis has a **MOVE** of 2.

Mephitis mephitis can emit a highly unpleasant odor, and can also do cartwheels - sometimes at the same time!

Image by Colin Moore


www.illustratemoore.com

Cold, Cool, Warm

Raccoon

Procyon lotor

63



Animalia, Chordata, Mammalia

1 POINTS

Procyon lotor has a **MOVE** of 2.

Procyon lotor is also considered to be an **INVASIVE** species of Mammalia cards of identical scale and food chain rank.

Image by Randy Laybourne


lookforwardtothepast.com

Cold, Cool, Warm

Western Red Cedar

Thuja plicata

91



Plantae, Pinophyta, Pinopsida

3 POINTS

Thuja plicata has a **SPREAD** of 1 (requires a **WIND** card).


Image by Kirsten Call

www.kirstencall.com

Cold, Cool, Warm

Flood!

Event Card



Event

PLAY: on 1 **SPECIES** card of any land based **TERRAIN**.

EFFECT: Convert to **FRESHWATER** terrain for 1 turns. Discard played **SPECIES** that is incompatible.


Image by John Burnett

johnnyburn.blogspot.com/

Nootka Rose

Rosa nutkana

51



Plantae, Magnoliophyta, Magnoliopsida

3 POINTS

Oemleria cerasiformis has a **SPREAD** of 1 (requires a **POLLINATOR**).

Image by Derek Tan


www.botany.ubc.ca/derek

Cold, Cool, Warm

Ruby-Throated Hummingbird

Archilochus colubris

52



Animalia, Chordata, Aves

5 POINTS

Archilochus colubris has a **FLIGHT** of 2.

Image by Tricia Arnold

babbietrish.blogspot.com/

Cool, Warm

Atlantic Horseshoe Crab
Limulus polyphemus

6 3



Animalia, Arthropoda, Merostomata

6 POINTS

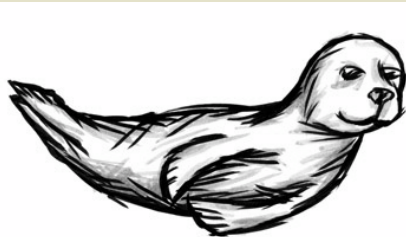
- *Limulus polyphemus* has a **MOVE** of 2.
- *Limulus polyphemus* must be played next to at least one **LAND TERRAIN** neighbour.

Image by 5bodyblade
5bodyblade.deviantart.com/

**Cool,
Warm**

Harbor Seal
Phoca vitulina

7 3



Animalia, Chordata, Mammalia

8 POINTS

- *Phoca vitulina* has a **MOVE** of 2.
- *Phoca vitulina* must be played next to at least one **OCEAN TERRAIN** neighbour.

Image by Randy Laybourne
lookforwardtothepast.com

Cold, Cool

Caulerpa peltata
Caulerpa peltata

5 1



Plantae, Chlorophyta, Bryopsidophyceae

5 POINTS

- *Caulerpa peltata* has a **SPREAD** of 1/2 (1 per 2 turns).

Image by Ernst Haeckel
commons.wikimedia.org/wiki/Kunstformen_der_Natur

**Cool,
Warm**

Escherichia coli
Escherichia coli

2 1



Bacteria, Proteobacteria, Gamma

Proteobacteria

2 POINTS

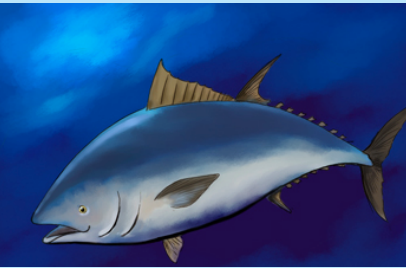
- *Escherichia coli* has a **SPREAD** of 1.
- *Escherichia coli* can be placed with any **TERRAIN**.

Image by environmental-hazard
environmental-hazard.deviantart.com/

**Cold, Cool,
Warm**

Northern Blue Fin Tuna
Thunnus thynnus

8 3



Animalia, Chordata, Actinopterygii

6 POINTS

- *Thunnus thynnus* has a **MOVE** of 3.

"Female bluefin are thought to produce up to 40 million eggs."

Image by Dan Deibler
www.flickr.com/photos/tunamatrix

Cold, Cool

Rainbow Trout
Oncorhynchus mykiss

6 3



Animalia, Chordata, Actinopterygii

8 POINTS

- *Oncorhynchus mykiss* has a **MOVE** of 3.
- *Oncorhynchus mykiss* can also feed on Plankton.

Image by Tiffany Mills
tiffanysketchblog.blogspot.com

Cold, Cool