

# BEATY BIODIVERSITY DECK

## STARTER DECK VERSION 3.0

**Phylo** THE TRADING CARD GAME BETA

THIS DOCUMENT INCLUDES 8 PAGES OF CARDS (48 PHYLO CARDS) AND 1 CARD BACK PAGE.

NOTE THAT CARD SIZE IS IDENTICAL TO THAT OF POKEMON CARDS (62 mm x 87 mm or 2 7/16 inches x 3 7/16 inches).

WE RECOMMEND PRINTING THESE CARDS, IN COLOUR, ON 65LB+ WHITE CARD STOCK.

USING CARD SLEEVE PROTECTORS (~64mm x 89mm) OR LAMINATING CARDS WILL ALSO GREATLY ENHANCE THE FEEL OF THE CARDS.

FOR MORE CARDS, GAME RULES, AND GENERAL INFORMATION ABOUT THE PHYLO PROJECT, PLEASE GO TO:

<http://phylogame.org>

**Himalayan Blackberry** 5 1  
*Rubus armeniacus*



Plantae, Angiosperms, Eudicots  
3 POINTS

**Play:** *Rubus armeniacus* is an **INVASIVE** species of *Plantae* cards of identical scale.

Image by Alexandria Neonakis  
alexneonakis.com/

Cool,  
Warm, Hot

**Steller Sea Lion** 8 3  
*Eumetopias jubatus*



Animalia, Chordata, Mammalia  
8 POINTS

**Play:** *Eumetopias jubatus* has a **MOVE** of 2

**Fact:** *Eumetopias jubatus* feed on a variety of fish, squid and octopus, and sometimes even other seals.

Image by Alexandria Neonakis  
alexneonakis.com/

Cold, Cool

**Killer Whale** 9 3  
*Orcinus orca*



Animalia, Chordata, Mammalia  
10 POINTS

**Play:** *Orcinus orca* has a **MOVE** of 2

**Fact:** *Orcinus orca* feed on fish, sea lions, seals, walruses and even large whales

Image by Kyu Hwang  
kyuhwang.com/

Cold, Cool

**Zooplankton** 2 1  
*Copepoda* subclass



Animalia, Arthropoda, Macillopoda  
2 POINTS

**Play:** *Copepoda* has a **MOVE** of 1. Can feed Salmon, Blue Whale **SPECIES** cards.

**Fact:** *Copepoda* are primarily transported by ambient water currents

Image by Brandy Masch  
www.brandymasch.com/

Cool,  
Warm

**Mycorrhizal Fungi** 3 1  
*Oidiodendron*



Fungi, Basidiomycota, Agaricomycetes  
3 POINTS


**Play:** *Oidiodendron* must be played adjacent to a **PLANT SPECIES**

**Fact:** *Oidiodendron* forms a mutualistic relationship with the roots of most plant species

Image by Kyle McQueen  
kylemcqueen.net/

Cold, Cool,  
Warm, Hot

**Giant Kelp** 8 1  
*Macrocystis pyrifera*




Chromalveolata, Heterokontophyta, Phaeophyta  
4 POINTS

**Fact:** *Macrocystis pyrifera* is one of the fastest-growing organisms on Earth

Image by Lindsay Chetek  
www.lindsaychetek.com/

Cool,  
Warm

**Dragonfly** 4 3  
*Anisoptera infraorder*



Animalia, Arthropoda, Insecta  
8 POINTS


**Play:** *Anisoptera* has a **FLIGHT** of 2

**Fact:** *Anisoptera* are some of the fastest insects in the world

Image by Brandy Masch  
www.brandymasch.com/

Cool,  
Warm

**Sockeye Salmon** 6 3  
*Oncorhynchus nerka*



Animalia, Chordata, Actinopterygii  
7 POINTS

**PLAY:** *Oncorhynchus nerka* has a **MOVE** of 2. Can also feed off on **ZOOPLANKTON SPECIES**.

**FACT:** The young fish, known as fry, spend up to three years in the freshwater lake before migrating to the ocean.

Image by Brandy Masch  
www.brandymasch.com/

Cold, Cool

**Clark's Nutcracker** 5 3  
*Nucifraga columbiana*



Animalia, Chordata, Aves  
3 POINTS

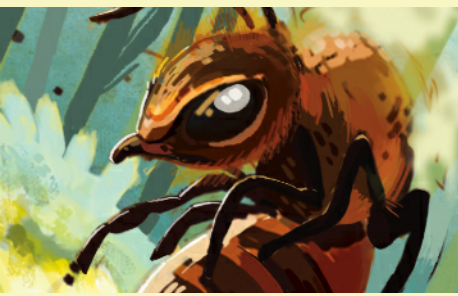
**Play:** *Nucifraga columbiana* has a flight of 2

**Fact:** *Nucifraga columbiana* eat a wide range of insect prey, berries and other fruits, small mammals and flesh from carcasses

Image by Lindsay Chetek  
www.lindsaychetek.com/

Cold, Cool

**European Honey Bee** 4 2  
*Apis mellifera*




Animalia, Arthropoda, Insecta  
5 POINTS

**Play:** *Apis mellifera* has a **FLIGHT** of 2 and is considered a **POLLINATOR**.

Image by Kyle McQueen  
kylemcqueen.net/

Cool,  
Warm, Hot

**Oil Spill**  
Event Card



Event

**Play:** Place this card on any ocean or fresh water based **SPECIES** card

**Effect:** The **SPECIES** card is **IMMEDIATELY** discarded.

Image by Kyu Hwang  
kyuhwang.com/

**Marbled Murrelet** 6 3  
*Brachyramphus marmoratus*



Animalia, Chordata, Aves  
7 POINTS

**Play:** *Brachyramphus marmoratus* has a **FLIGHT** of 2


**Fact:** *Brachyramphus marmoratus* are currently **ENDANGERED**

Image by Victoria Heryet  
victoriaheryet.com/

Cool,  
Warm



**Species Protection**  
Event Card



Event

**Play:** You can play this card immediately after your opponent has played an **EVENT** card on one of your **SPECIES**.

**Effect:** Negates the effect of the **EVENT** card. Does not work on **EVENT** cards that are not played specifically on top of **SPECIES**.

Image by *Brandy Masch*  
www.brandymasch.com/

**Moss Mite**  
*Oribatida* order

4 3



Animalia, Arthropod, Arachnida

9 POINTS

**Play:** *Oribatida* has a **MOVE** of 1.

**Fact:** Also known as a Beetle Mite.

Image by *Kyle McQueen*  
kylemcqueen.net/

Warm, Hot

**Whitebark Pine**  
*Pinus albicaulis*

9 1



Plantae, Pinophyta, Pinopsida

3 POINTS

**Fact:** *Pinus albicaulis* may grow more than 20 meters in height if in favorable conditions

Image by *Victoria Heryet*  
victoriaheryet.com/

Cold, Cool

**Wildfire**  
Event Card



Event

**Play:** Place on top of any **SPECIES** card of Grassland or Forest **TERRAIN**

**Effect:** The species card beneath the Wildfire is **IMMEDIATELY** discarded.

Image by *Alexandria Neonakis*  
alexneonakis.com/

**Black Bear**  
*Ursus americanus*

8 3



Animalia, Chordata, Mammalia

5 POINTS

**Play:** *Ursus americanus* has a **MOVE** of 2

**Fact:** *Ursus americanus* are omnivores and their diets vary greatly depending on season and location

Image by *Lindsay Chetek*  
www.lindsaychetek.com/

Cool, Warm

**Habitat Loss**  
Event Card



Event

**Play:** Place this card on any **SPECIES** card and change it's habitat to **URBAN** permanently

**Effect:** This **SPECIES** card must be **IMMEDIATELY** removed. You may leave this card on the table to show this place is now **URBAN** terrain.

Image by *Kyle McQueen*  
kylemcqueen.net/



### Earthworm

*Lumbricus terrestris*

4 **2**



Animalia, Annelida, Clitellata

4 POINTS

**Play:** *Lumbricus terrestris* has a **MOVE** of 1

**Fact:** Folk names for the *Lumbricus terrestris* include "dew-worm", "rain worm", "night crawler" and "angleworm"

Image by Kyu Hwang  
kyuhwang.com/

**Cool,  
Warm**

### Human

*Homo sapiens*

8 **3**



Animalia, Chordata, Mammalia

3 POINTS

**Play:** *Homo sapiens* has a **MOVE** of 2. Although an omnivore, this card can only be played next to **SPECIES CARD** that represent food that humans would actually eat.

Image by Alexandria Neonakis  
alexneonakis.com/

**Cold, Cool,  
Warm, Hot**

### Mosquito

*Culicinae* subfamily

4 **3**



Animalia, Arthropoda, Insecta

5 POINTS

**Play:** *Culicinae* has a **MOVE** of 2 and may be played next to a Human, Black Bear, Clark's Nutcracker or Whitebark Pine **SPECIES** card.

**Fact:** Many species of mosquitoes are not bloodsuckers.

Image by Kyu Hwang  
kyuhwang.com/

**Cool,  
Warm, Hot**

### Blue Whale

*Balaenoptera musculus*

9 **3**



Animalia, Chordata, Mammalia

9 POINTS

**Play:** *Balaenoptera musculus* has a **MOVE** of 2 and requires a **KRILL** card for diet

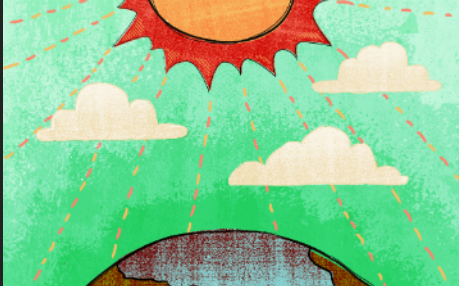
**Fact:** *Balaenoptera musculus* usually live alone or with one other individual.

Image by Brandy Masch  
www.brandymasch.com/

**Cold, Cool**

### Climate Change

Event Card



Event

**Play:** When playing this card, roll six sided die and consult below:

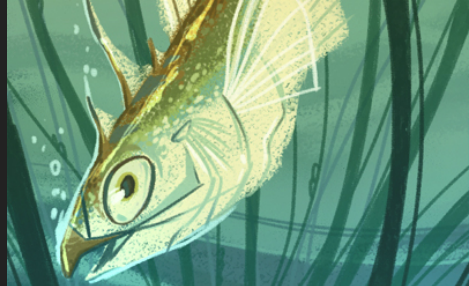
**Effect :** A roll of 1 to 4 - remove the same number of adjacent **SPECIES** cards; 5 or 6 - the game will **RESTART** but this time **WITHOUT** the Climate Change card.

Image by Lindsay Chetek  
www.lindsaychetek.com/

### Three-spined Stickleback

*Gasterosteus aculeatus*

5 **3**



Animalia, Chordata, Actinopterygii

5 POINTS

**Play:** *Gasterosteus aculeatus* has a **MOVE** of 2 and can also feed on **ZOOPLANKTON**.

**Fact:** *Gasterosteus aculeatus* has a pelvic fin which is used to protect the fish against other fish predators

Image by Alexandria Neonakis  
alexneonakis.com/

**Cold, Cool**

**Isoetes cristatum (Moss)**

*Isoetes cristatum*

5 1



Bryophyta, Plantae, Sphagnopsida

2 POINTS

**Fact:** *Isoetes cristatum* are small, soft plants that are typically 1–10 cm tall



Image by [Victoria Heryet](https://victoriaheryet.com/)

**Cold, Cool,  
Warm, Hot**



**Himalayan Blackberry**  
*Rubus armeniacus* **5 1**




Plantae, Angiosperms, Eudicots  
**3 POINTS**

**Play:** *Rubus armeniacus* is an **INVASIVE** species of *Plantae* cards of identical scale.

Image by Alexandria Neonakis  
alexneonakis.com/

Cool,  
Warm, Hot

**Oil Spill**  
Event Card




Event

**Play:** Place this card on any ocean or fresh water based **SPECIES** card

**Effect:** The **SPECIES** card is **IMMEDIATELY** discarded.

Image by Kyu Hwang  
kyuhwang.com/

**Species Protection**  
Event Card



Event

**Play:** You can play this card immediately after your opponent has played an **EVENT** card on one of your **SPECIES**.

**Effect:** Negates the effect of the **EVENT** card. Does not work on **EVENT** cards that are not played specifically on top of **SPECIES**.

Image by Brandy Masch  
www.brandymasch.com/

**Whitebark Pine**  
*Pinus albicaulis* **9 1**




Plantae, Pinophyta, Pinopsida  
**3 POINTS**

**Fact:** *Pinus albicaulis* may grow more than 20 meters in height if in favorable conditions

Image by Victoria Heryet  
victoriaheryet.com/

Cold, Cool

**Wildfire**  
Event Card



Event

**Play:** Place on top of any **SPECIES** card of Grassland or Forest **TERRAIN**

**Effect:** The species card beneath the Wildfire is **IMMEDIATELY** discarded.

Image by Alexandria Neonakis  
alexneonakis.com/

**Habitat Loss**  
Event Card



Event

**Play:** Place this card on any **SPECIES** card and change it's habitat to **URBAN** permanently

**Effect:** This **SPECIES** card must be **IMMEDIATELY** removed. You may leave this card on the table to show this place is now **URBAN** terrain.

Image by Kyle McQueen  
kylemcqueen.net/

**Zooplankton**  
*Copepoda subclass* **2 1**



Animalia, Arthropoda, Macillopoda  
**2 POINTS**


**Play:** *Copepoda* has a **MOVE** of 1. Can feed Salmon, Blue Whale **SPECIES** cards.

**Fact:** *Copepoda* are primarily transported by ambient water currents

Image by Brandy Masch  
www.brandymasch.com/

Cool, Warm

**Giant Kelp**  
*Macrocystis pyrifera* **8 1**



Chromalveolata, Heterokontophyta, Phaeophyta  
**4 POINTS**

**Fact:** *Macrocystis pyrifera* is one of the fastest-growing organisms on Earth

Image by Lindsay Chetek  
www.lindsaychetek.com/

Cool, Warm

**Oil Spill**  
Event Card




Event

**Play:** Place this card on any ocean or fresh water based **SPECIES** card

**Effect:** The **SPECIES** card is **IMMEDIATELY** discarded.

Image by Kyu Hwang  
kyuhwang.com/

**Wildfire**  
Event Card




Event

**Play:** Place on top of any **SPECIES** card of Grassland or Forest **TERRAIN**

**Effect:** The species card beneath the Wildfire is **IMMEDIATELY** discarded.

Image by Alexandria Neonakis  
alexneonakis.com/

**Habitat Loss**  
Event Card



Event

**Play:** Place this card on any **SPECIES** card and change it's habitat to **URBAN** permanently

**Effect:** This **SPECIES** card must be **IMMEDIATELY** removed. You may leave this card on the table to show this place is now **URBAN** terrain.

Image by Kyle McQueen  
kylemcqueen.net/

**Pacific Krill**  
*Euphausia pacifica* **4 2**



Animalia, Arthropoda, Malacostraca  
**6 POINTS**

**Play:** *Euphausia pacifica* has a **MOVE** of 1. Should be played adjacent to a **PLANKTON** species card.


**Fact:** *Euphausia pacifica* oil can be used as a food supplement

Image by Victoria Heryet  
victoriaheryet.com/

Cold, Cool



**Home Card**  
Beaty Biodiversity Museum, Vancouver



Starter

- This is a **HOME** card. The game starts with each player having a **HOME** card played on the table next to each other.
- **HOME** cards represent all **TERRAIN** and **CLIMATE** values.

Image by *Derek Tan*  
[www.botany.ubc.ca/derek/portfolio.html](http://www.botany.ubc.ca/derek/portfolio.html)

**European Honey Bee**  
*Apis mellifera*

4 2



Animalia, Arthropoda, Insecta


5 POINTS

**Play:** *Apis mellifera* has a **FLIGHT** of 2 and is considered a **POLLINATOR**.

Image by *Kyle McQueen*  
[kylemcqueen.net/](http://kylemcqueen.net/)

Cool,  
Warm, Hot

**Oil Spill**  
Event Card




Event

**Play:** Place this card on any ocean or fresh water based **SPECIES** card

**Effect:** The **SPECIES** card is **IMMEDIATELY** discarded.

Image by *Kyu Hwang*  
[kyuhwang.com/](http://kyuhwang.com/)

**Wildfire**  
Event Card



Event

**Play:** Place on top of any **SPECIES** card of Grassland or Forest **TERRAIN**

**Effect:** The species card beneath the Wildfire is **IMMEDIATELY** discarded.

Image by *Alexandria Neonakis*  
[alexneonakis.com/](http://alexneonakis.com/)

**Pacific Krill**  
*Euphausia pacifica*

4 2



Animalia, Arthropoda, Malacostraca

6 POINTS

**Play:** *Euphausia pacifica* has a **MOVE** of 1. Should be played adjacent to a **PLANKTON** species card.

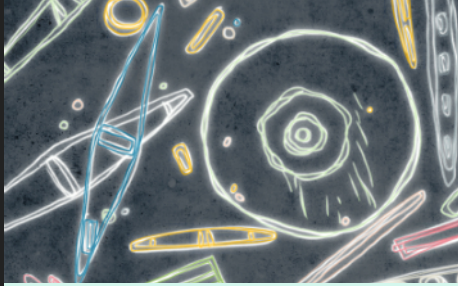
**Fact:** *Euphausia pacifica* oil can be used as a food supplement

Image by *Victoria Heryet*  
[victoriaheryet.com/](http://victoriaheryet.com/)

Cold, Cool

**Phytoplankton**  
Marine and Freshwater variety

2 1



Chromalveolata, Cyanobacteria, Dinoflagell

2 POINTS

**Play:** *Symbiodinium spp* has a **MOVE** of 1, and is often eaten by **KRILL SPECIES**.

**Fact:** *Symbiodinium spp* are also crucially dependent on minerals

Image by *Kyu Hwang*  
[kyuhwang.com/](http://kyuhwang.com/)

Cold, Cool,  
Warm





phylogame.org card back  
pattern: suzanne norris | [www.sakurasnow.com](http://www.sakurasnow.com)  
logo: haley fiege | [www.kingdomofawesome.com](http://www.kingdomofawesome.com)

