

LONDON NHM DECK

SCAVENGER HUNT DECK



Deck, Scavenger Hunt

[Deck Home](#) | [Download](#)

This deck includes a variety of organisms that can be found as specimen exhibits in London's Natural History Museum. Happy hunting!

Graphic by London NHM

www.nhm.ac.uk/

Mandrill

Mandrillus sphinx

7 3



Animalia, Chordata, Mammalia

6 POINTS

Play: *Mandrillus sphinx* has a **MOVE** of 2.

Fact: The mandrill is recognized by its olive-colored fur and the colorful face and rump of males.

Graphic by Alexandra Prillaman

mytholalia.com/

Warm, Hot

Polar Bear

Ursus maritimus

8 3



Animalia, Chordata, Mammalia

10 POINTS

Play: *Ursus maritimus* has a **MOVE** of 2.

Fact: Many leading polar bear biologists have expressed grave concerns about the impact of climate change on the survival of this species.

Graphic by Ashley Nava

quicksilvercreatures.wordpress.com/

Cold

European Holly

Ilex aquifolium

9 1



Plantae, Angiosperms, Eudicots

3 POINTS

Fact: *Ilex aquifolium* is also known as Christmas Holly.

Graphic by Ostrokrzew kolczasty

commons.wikimedia.org/wiki/File:Ilex_aquifolium.jpg

Cold, Cool, Warm

Eurasian Otter

Lutra lutra

6 3



Animalia, Chordata, Mammalia

4 POINTS

Play: *Lutra lutra* has a **MOVE** of 2 and must be adjacent to at least one **FRESHWATER** terrain card.

Graphic by jfapeacock

jfapeacock.deviantart.com/

Cool, Warm

Bald Eagle

Haliaeetus leucocephalus

6 3



Animalia, Chordata, Aves

8 POINTS

Play: *Haliaeetus leucocephalus* has a **FLIGHT** of 2 and needs to be adjacent to at least one **FOREST** and one **WATER BASE** terrain.

Graphic by Joanna Barnum

www.joannabarnum.com/

Cold, Cool, Warm

Field Maple

Acer campestre

9 1



Plantae, Angiosperms, Eudicots

4 POINTS

Fact: In North America, *Acer campestre* is known as Hedge Maple and in Australia it is sometimes called Common Maple.

Graphic by Carl Axel Magnus Lindman
en.wikipedia.org/wiki/Carl_Axel_Magnus_Lindman

Cool, Warm

Evergreen Dogwood

Cornus capitata

9 1



Plantae, Angiosperms, Eudicots

4 POINTS

Fact: *Cornus capitata* is also known as Bentham's cornel, Himalayan flowering dogwood, and evergreen dogwood.

Graphic by Derek McCrea
www.derekmccrea.50megs.com/

Cool, Warm

Field Poppy

Papaver rhoeas

6 1



Plantae, Magnoliophyta, Magnoliopsida

2 POINTS

Fact: This poppy, a native of Europe, is notable as an agricultural weed and as a symbol of fallen soldiers.

Graphic by Anca Damian
ankkutza.deviantart.com/

Cool, Warm

Mute Swan

Cygnus olor

7 3



Animalia, Chordata, Aves

3 POINTS

Play: *Cygnus olor* has a **FLIGHT** of 2 and must be placed adjacent to at least one **WATER-BASED TERRAIN** containing card.

Fact: The mute swan is one of the heaviest flying birds.

Graphic by lightbird
lightbird.deviantart.com/

Cool, Warm

Common Blackbird

Turdus merula

6 3



Animalia, Chordata, Aves

4 POINTS

Play: *Turdus merula* has a **FLIGHT** of 2.

Fact: *Turdus merula* migrates gregariously (in a flock).

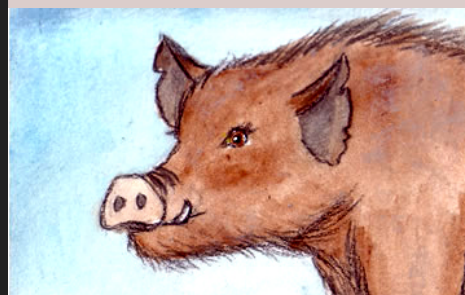
Graphic by Ciaran Duffy
hellociaranduffy.com

Cool, Warm

Wild Boar

Sus scrofa

7 3



Animalia, Chordata, Mammalia

1 POINTS

Play: *Sus scrofa* has a **MOVE** of 2.

Fact: *Sus scrofa* is the wild ancestor of the domestic pig.

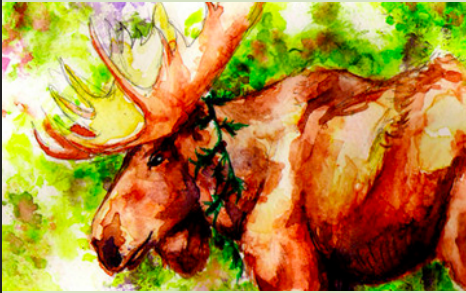
Graphic by h.c. O'Neill
www.rainydaypaperback.com

Cold, Cool, Warm

Moose

Alces alces

8 2



Animalia, Chordata, Mammalia

5 POINTS

Play: *Alces alces* has a **MOVE** of 2.

Fact: In Europe, a moose is known as a European Elk.

Graphic by Catherine Fielder
i-h4x3d.deviantart.com/

Cold, Cool

Increase Biodiversity

Event card



Event

PLAY: can be played immediately for below effect and then discarded.

EFFECT: Allows player to look through his/her discard pile, and choose 1 **SPECIES** card to put back into his/her hand.

Graphic by demonflair
demonflair.deviantart.com/

Gray Wolf

Canis lupus

7 3



Animalia, Chordata, Mammalia

7 POINTS

Play: *Canis lupus* has a **MOVE** of 2.

Fact: Highly territorial, *Canis lupus* packs defend their territory through scent marking, howling, and direct attacks.

Graphic by Banto88
banto88.deviantart.com/

Cold, Cool, Warm

Resplendant Quetzal

Pharomachrus mocinno

5 3



Animalia, Chordata, Aves

3 POINTS

Play: *Pharomachrus mocinno* has a **FLIGHT** of 2.

Fact: The ancient Aztecs and Maya viewed the quetzal as the "god of the air" and as a symbol of goodness and light.

Graphic by Tricia Arnold
babblerish.blogspot.com/

Cool, Warm

Golden Lion Tamarin

Leontopithecus rosalia

6 3



Animalia, Chordata, Mammalia

6 POINTS

Play: *Leontopithecus rosalia* has a **MOVE** of 2.

Fact: Local legends say that the Tamarin have psychic powers that help them hunt.

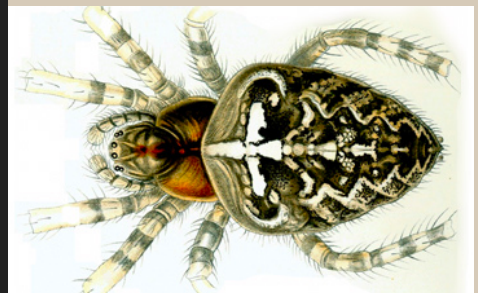
Graphic by Heather E. Harlow
phylogame.org

Warm, Hot

European Garden Spider

Araneus diadematus

4 3



Animalia, Arthropoda, Arachnida

10 POINTS

Play: *Araneus diadematus* has a **MOVE** of 2 and *Araneus diadematus* can feed on creatures of **SCALE** 5 or less.

Graphic by Ernst Haeckel

commons.wikimedia.org/wiki/Kunstformen_der_Natur

Overpopulation

Event card



Event

Play: Place on any **SPECIES** card of **FOOCHAIN** 2 or higher.

Effect: Any **SPECIES** card(s) that is the adjacent "diet" of the played card is immediately discarded.

Graphic by Catherine Fielder
l-h4x3d.deviantart.com/

Atlantic Footballfish

Himantolophus groenlandicus

5 3



Animalia, Chordata, Actinopterygii

10 POINTS

Play: *H. groenlandicus* has a **MOVE** of 2 and can act as a **PARASITE** on other *H. groenlandicus* cards in play.

Fact: At maturity, the much smaller male becomes a parasite of the female

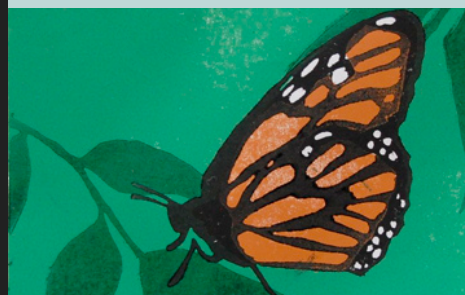
Graphic by Adam Smith
rupted.deviantart.com/

Cold, Cool

Monarch Butterfly

Danaus plexippus

4 2



Animalia, Arthropoda, Insecta

5 POINTS

Play: *Danaus plexippus* has a **MOVE** of 2.

Fact: *Danaus plexippus* is considered a **POLLINATOR**.

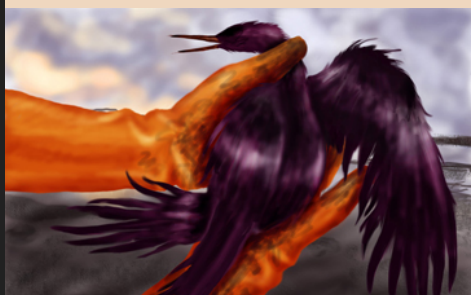
Graphic by Lamorien

lamorien.deviantart.com/

Cool, Warm

Oil Spill

Event Card



Event

Play: Place this card on any water based **SPECIES** card

Effect: The played **SPECIES** card is discarded. All neighbouring species cards still adjacent to the **EVENT** after 1 turn will also need to be discarded.

Graphic by Stephanie Tan
wildhue.deviantart.com/

Fennec Fox

Vulpes zerda

6 3



Animalia, Chordata, Mammalia

6 POINTS

Play: *Vulpes zerda* has a **MOVE** of 2.

Fact: Families of *Vulpes zerda* can dig huge underground dens.

Graphic by Heather E. Harlow
phylogame.org

Warm, Hot

European Badger

Meles meles

6 3



Animalia, Chordata, Mammalia

4 POINTS

Play: *Meles meles* has a **MOVE** of 2.

Fact: *Meles meles* can become torpid (a kind of temporary hibernation) for two or so days at a time.

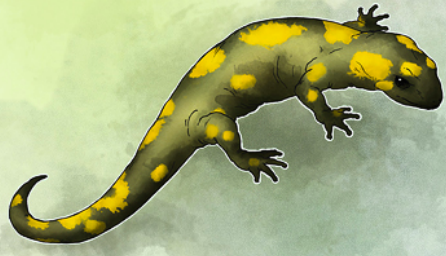
Graphic by Ursula Vernon
ursulavernon.com

Cool, Warm

Fire Salamander

Salamandra salamandra

6 3



Animalia, Chordata, Amphibia

9 POINTS

Play: *Salamandra salamandra* has a **MOVE** of 2.

Fact: *Salamandra salamandra* is able to secrete toxins through its skin.

Graphic by Celeste Agnes
slightly.weirdly.net

Cool, Warm

Boa Constrictor

Boa constrictor

8 3



Animalia, Chordata, Reptilia

8 POINTS

Play: *Boa constrictor* has a **MOVE** of 2.

Fact: *Boa constrictor* can grow up to 4m (13ft) long.

Graphic by Celeste Agnes
slightly.weirdly.net

Warm, Hot

Kakapo

Strigops habroptila

6 2



Animalia, Chordata, Aves

6 POINTS

Play: *Strigops habroptila* has a **MOVE** of 1.

Fact: Kakapo are critically endangered; as of February 2010, only 123 living individuals are known.

Graphic by Diana Sudyka
www.dianasudyka.com/

Cool, Warm

Cock-eyed Squid

Histioteuthis sp.

5 3



Animalia, Mollusca, Cephalopoda

9 POINTS

Play: *Histioteuthis* has a **MOVE** of 2.

Fact: *Histioteuthis* lives at depths of around 1500 ft (500-1000 meters).

Graphic by Gina Allnatt
ginasketch.carbonmade.com

Cool

Habitat Loss

Event Card



Play: Place this card on any **SPECIES** card.

Effect: The **SPECIES** card must be removed immediately. You may leave this card on the table to show that this location cannot be used anymore in the game.

Graphic by A. L. Radeck
alradeck.daportfolio.com/

Tsunami

Event Card



Event

Play: Place on 1 **SPECIES** card, that is neighbouring a card with **OCEAN** terrain.

Effect: Convert that spot and one additional adjacent spot to **OCEAN** terrain for 1 turn. Discard affected **SPECIES** that are incompatible. Note that species capable of **FLIGHT** are exempt.

Graphic by Devin Young
logic-bomb42.deviantart.com/

Lion

Panthero leo

8 3



Animalia, Chordata, Mammalia

10 POINTS

Play: *Leo panthera* has a **MOVE** of 2.

Fact: A unique characteristic of both females and males is that the tail ends in a hairy tuft, which often conceals a hard "spine" or "spur". The function of the tuft and spine are unknown.

Graphic by *Ele Willoughby*
minouette.etsy.com

Warm, Hot

Raccoon

Procyon lotor

6 3



Animalia, Chordata, Mammalia

1 POINTS

Play: *Procyon lotor* has a **MOVE** of 2 and can be an **INVASIVE** species of *Mammalia* cards of identical scale and food chain rank.

Fact: Studies on raccoon memory showed they can remember the solutions to tasks for up to three years.

Graphic by *Randy Laybourne*
lookforwardtothepast.com

Cold, Cool,
Warm

Red Panda

Ailurus fulgens

6 3



Animalia, Chordata, Mammalia

4 POINTS

Play: *Ailurus Fulgens* has a **MOVE** of 2.

Fact: *Ailurus Fulgens* is often referred to as the "cutest animal on the planet."

Graphic by *Heather Ravenscroft*
heatherravenscroft.wordpress.com

Cool, Warm