

NATURAL HISTORY MUSEUM

London, England



Home Card

PLAY: This is a HOME card. The game starts with each player placing his or her HOME card on the table adjacent to his or her opponent's HOME card.

HOME cards represent all TERRAIN and CLIMATE values.



Image by Alfred Waterhouse
en.wikipedia.org/wiki/Alfred_Waterhouse

HOT WARM COOL COLD

COMMON BLACKBIRD

6 3

Turdus merula



Animalia, Chordata, Aves

4

POINTS

PLAY: Common Blackbird has a FLIGHT of 2.

FACT: Common blackbirds migrate gregariously (in flocks).



Image by Ciaran Duffy
www.heliodaran.com



WARM COOL

COMMON DANDELION

5 1

Taraxacum officinale



Plantae, Angiosperms, Eudicots

2

POINTS

FACT: A dandelion's bright yellow flowers are open in the daytime but closed at night.



Image by Karissa Sartell
redbubble.com/people/karissasartell



WARM COOL

APPLE TREE

9 1

Malus domestica



Plantae, Angiosperms, Eudicots

3

POINTS

FACT: Different *Malus domestica* trees produce more than 7,500 known types of apples.



Image by Elianne Hänggi
www.elianne.ch

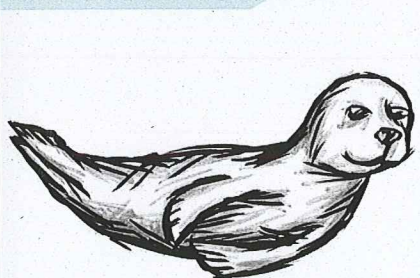


WARM COOL

HARBOR SEAL

7 3

Phoca vitulina



Animalia, Chordata, Mammalia

6

POINTS

PLAY: Harbor Seal has a MOVE of 2 and must be played next to at least one OCEAN TERRAIN neighbour.

FACT: Harbor seals have distinctive V-shaped nostrils.



Image by Randy Laybourne
www.lookforwardtothepast.com



COOL COLD

OVERPOPULATION

Event Card



Event Card

PLAY: This card can be played on top of 1 SPECIES card of FOODCHAIN 2 or higher (on any TERRAIN).

EFFECT: Any SPECIES card that is the diet of the played card is immediately discarded.



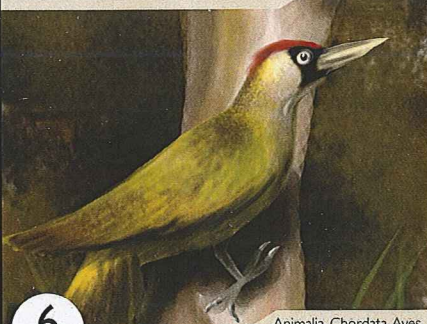
Image by Catherine Fielder
t-h4x3d.deviantart.com

HOT WARM COOL COLD

GREEN WOODPECKER

5 3

Picus viridis



Animalia, Chordata, Aves

6

POINTS

PLAY: Green Woodpecker has a FLIGHT of 2.

FACT: A green woodpecker's tongue is so long (10 cm) that it has to be curled around its skull.



Image by Dutch Flower
dutch-flower.deviantart.com



WARM COOL

MIGRATION

Event Card



Event Card

PLAY: Place this card on 1 SPECIES card of any TERRAIN. This card has an immediate effect.

EFFECT: The affected SPECIES card AS WELL AS adjacent cards (under the player's control) can all MOVE: this together will count as a single action. Discard this EVENT after use.



Image by Aimee Lockwood
t-lains.deviantart.com

HOT WARM COOL COLD

COMMON RAVEN

6 3

Corvus corax



Animalia, Chordata, Aves

1

POINT

PLAY: Common Raven has a FLIGHT of 2.

FACT: Juveniles ravens are among the most playful of all birds.



Image by Michelle Davison
www.etsy.com/shop/arteriole



HOT WARM COOL

PEDUNCULATE OAK 9 1

Quercus robur



Plantae, Angiosperms, Eudicots

3
POINTS

FACT: Pedunculate Oaks are extremely long-lived trees. Some European specimens are estimated to be over 1000 years old.



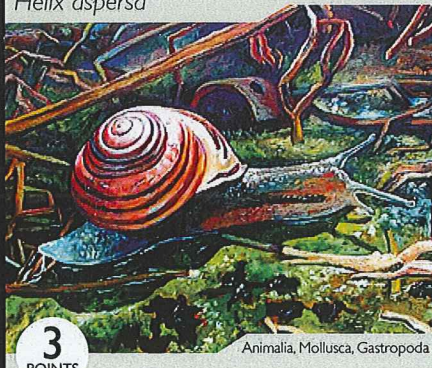
Image by Marcin Wolski
mwolski.deviantart.com



WARM

GARDEN SNAIL 4 2

Helix aspersa



Animalia, Mollusca, Gastropoda

3
POINTS

PLAY: Garden Snail has a MOVE of 1.

FACT: Garden snails are the fastest of all the different species of snails, with a top speed of 65 feet an hour.



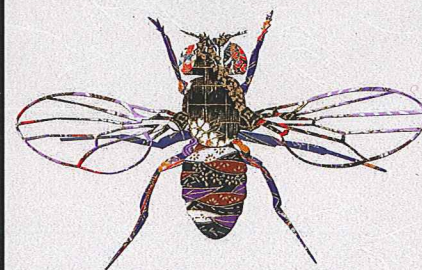
Image by Elizabeth Skelsey
inkgal8290.deviantart.com



WARM COOL

COMMON FRUIT FLY 4 2

Drosophila melanogaster



Animalia, Arthropoda, Insecta

4
POINTS

PLAY: Common Fruit Fly has a MOVE of 2.

FACT: A common fruit fly's wings can beat up to 220 times per second.



Image by Yukiko Fujiwara
www.cdb.riken.go.jp



WARM COOL

ESCAPE!

Event Card



Event Card

PLAY: This card can be played immediately for below effect and then discarded.

EFFECT: All of the player's SPECIES cards have double MOVE and FLIGHT values for the remainder of the turn.



Image by Katie Thierolf
wollyu.deviantart.com

HOT WARM COOL COLD

BLUE WHALE 9 3

Balaenoptera musculus



Animalia, Chordata, Mammalia

8
POINTS

PLAY: Blue Whale has a MOVE of 2 and requires a KRILL card for diet.

FACT: Blue whales usually live alone or with one other individual.



Image by Claran Duffy
www.hellocaran.com



WARM COOL COLD

PEACOCK BUTTERFLY 4 2

Inachis io



Animalia, Arthropoda, Insecta

3
POINTS

PLAY: Peacock Butterfly has a FLIGHT of 2 and is considered a POLLINATOR.

FACT: Peacock butterflies have a wingspan of 50 to 55 mm.



Image by Peter Vrijbrief
boy140495.deviantart.com



WARM COOL

COMMON CHAFFINCH 5 3

Fringilla coelebs



Chaffinch

Animalia, Chordata, Aves

2
POINTS

PLAY: Common Chaffinch has a FLIGHT of 2.

FACT: Common chaffinches have many names, including the "reduplicative shellapple shiltie."



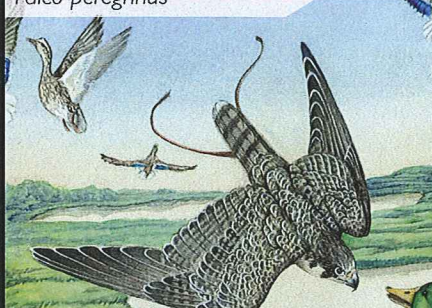
Image by Sonya Hallett
bonzaialetian.deviantart.com



WARM COOL

PEREGRINE FALCON 6 3

Falco peregrinus



Animalia, Chordata, Aves

6
POINTS

PLAY: Peregrine Falcon has a FLIGHT of 2.

FACT: Peregrine falcons became endangered before the 1970s, due to DDT usage.



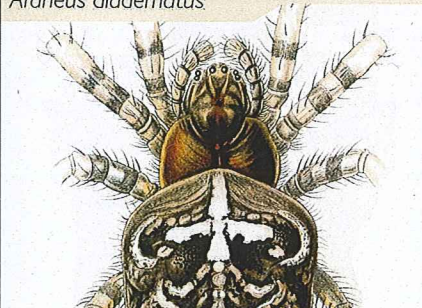
Image by Brenda Lyons
www.falconmoon.com



WARM COOL

EUROPEAN GARDEN SPIDER 4 3

Araneus diadematus



Animalia, Arthropoda, Arachnida

6
POINTS

PLAY: European Garden Spider has a MOVE of 2 and can feed on creatures of SCALE 5 or less.



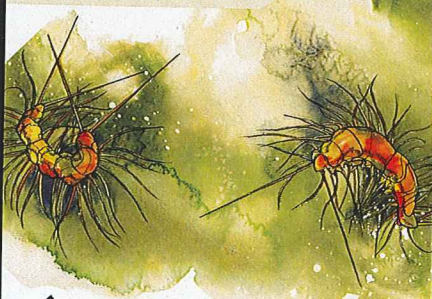
Image by Ernst Haeckel
commons.wikimedia.org/wiki/Kunstformen_der_Natur



WARM COOL

HOUSE CENTIPEDE 4 3

Scutigera coleoptrata



6
POINTS

Animalia, Arthropoda, Chilopoda

PLAY: House Centipede has a MOVE of 2.

FACT: House centipedes have a lifespan of three to seven years.



Image by Martha Iserman
www.bigredsharks.com



WARM COOL

RED FOX 7 3

Vulpes vulpes



1
POINT

Animalia, Chordata, Mammalia

PLAY: Red Fox has a MOVE of 2.

FACT: Red foxes are social animals, and typically live in groups which are led by one mated pair.



Image by Culpeo-Fox
culpeo-fox.deviantart.com



WARM COOL COLD

RED SQUIRREL 5 3

Sciurus vulgaris



3
POINTS

Animalia, Chordata, Mammalia

PLAY: Red Squirrel has a MOVE of 2.

FACT: Red squirrels do not hibernate but instead hide food to see them through scarce periods.



Image by Sonya Hallett
bonzaiaisatan.deviantart.com



WARM COOL

SEVEN-SPOT LADYBIRD 4 3

Coccinella septempunctata



6
POINTS

Animalia, Arthropoda, Insecta

PLAY: Seven-Spot Ladybird has a FLIGHT of 2, and can feed on creatures of SCALE 4 or less.

Seven-Spot Ladybird is an INVASIVE species of *Insecta* cards of identical scale, as well as a POLLINATOR.



Image by Louise van Wyk
babyclementine.deviantart.com



WARM COOL

WILD DAFFODIL 5 1

Narcissus pseudonarcissus



3
POINTS

Plantae, Magnoliophyta, Liliopsida

FACT: Daffodils are the national flower of Wales.



Image by Felicia Bartley
silent-agency.deviantart.com



WARM COOL

LARGE EARTH BUMBLEBEE 4 2

Bombus terrestris



4
POINTS

Animalia, Arthropoda, Insecta

PLAY: Large Earth Bumblebee has a MOVE of 2.

FACT: Large Earth bumblebees can find their nests from as far as 13 kilometres away.



Image by Erin English
breakbot.deviantart.com

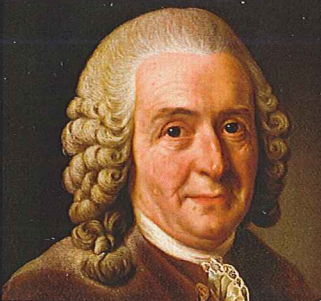


WARM COOL

LINNAEUS CARD

Event Card

Linne.



Event Card

PLAY: This card can be played immediately for below effect and then discarded.

EFFECT: When used, if a player can remember the Latin name for an organism in his/her discard pile, then he/she can retrieve that card.



Image by Alexander Roslin
en.wikipedia.org/wiki/Carl_Linnaeus

HOT WARM COOL COLD